

ARABIAN BRICK



koni[®]
B R I C K

THE PRODUCT

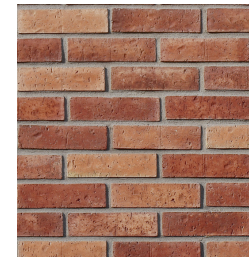
ARABIAN BRICK

Koni Materials specializes in supplying the highest quality manufactured concrete brick veneer products. Koni Arabian Brick is a great option when considering a home upgrade or construction project! With various colors and textures to accommodate your design inspiration, we can turn your vision into a reality.

AURORA



CARDINAL RED



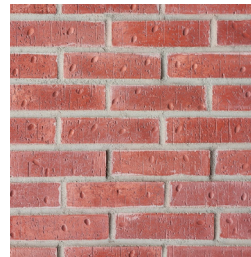
CHICAGO



GRAPHITE



INTENSE RED



MISSION



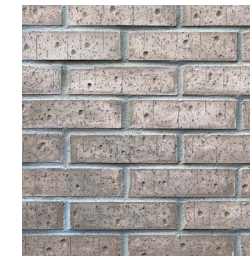
NEW JERSEY



QUEENS



STUDIO



****Colors shown are provided to demonstrate the colors & shades available. COLORS ARE ONLY APPROXIMATE****

THE BENEFITS

1. LOWEST CARBON FOOTPRINT

Concrete's unparalleled durability, energy efficiency and complete recyclability, combined with industry innovations such as carbonated concrete or concrete cured with CO2 rather than water, all contribute to making it the lowest carbon building material over the lifecycle of a structure or pavement.

2. ENERGY EFFICIENT

Concrete's ability to store energy (its thermal mass) helps moderate interior temperature conditions, reducing a building's heating and cooling demands over its service life by up to 8%.

3. LOW MAINTENANCE

Concrete lasts decades longer than alternative building materials, and actually gets stronger over time. This reduces the total cost of ownership as well as the environmental impact associated with more frequent rehabilitation or reconstruction.

4. VERSATILITY

Due to concrete's plasticity when freshly mixed, designers are able to adapt it to whatever project they need.

5. EMISSION FREE

A totally inert substance when cured, concrete is literally emission-free and will not emit any gas, toxic compounds or volatile organic compounds. Concrete materials will also not rot, burn, or deteriorate compared to some natural materials.

6. COST EFFECTIVE

Thanks to their durability, resilience, low maintenance requirements and energy efficiency, concrete structures lower operating costs related to operational energy consumption, maintenance, and rebuilding following disasters.

7. LONG LASTING

The process in which Arabian Brick is produced creates a product that will last years without any maintenance needs. The color infused into our concrete brick veneers will not fade over time, due to sun exposure, heat or the elements.

8. HAND MADE

About 90% of the production process which creates Antik Brick is executed by hand, making sure that each brick is handled with care and quality checked before making its way to our customers.

THE SPECS

1. SIZE (VARIES)

Individual (flats): 7.99 in x 2.17 in x 0.51 in - 0.47 in
Individual (corners): 8.07 in x 2.17 in x 0.55 in - 0.51 in
Per box (flats): 16.14 square feet
Per box (corners): 9.84 linear feet

2. WEIGHT (VARIES)

Individual (flats): 0.49 lb - 0.44lb
Individual (corners): 0.57 lb - 0.55lb
Per box (flats): 47.40 lb
Per box (corners): 25.79 lb

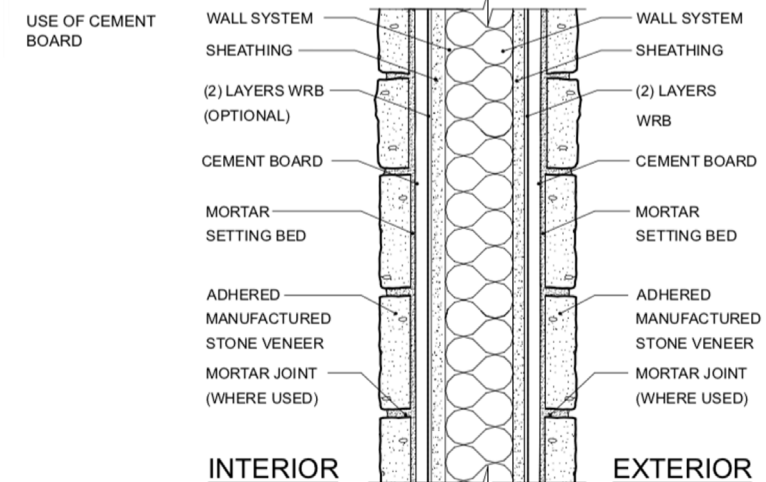
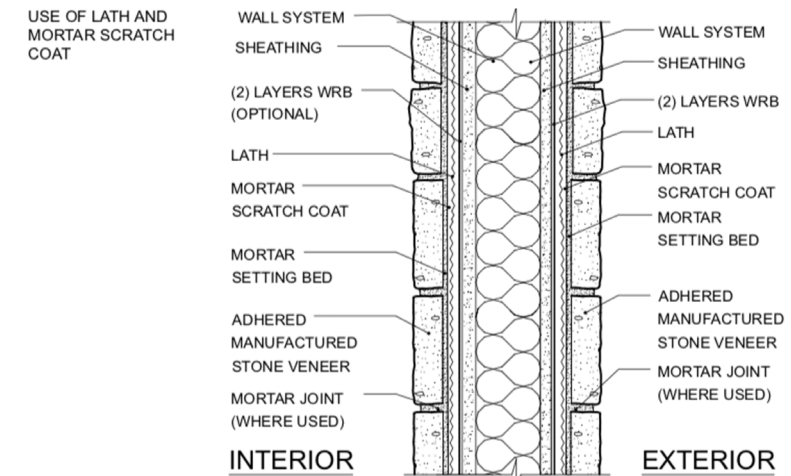
3. COMPOSITION

Portland Cement
Mineral Aggregates
Iron Oxide Pigments
Concrete Additives
DOES NOT CONTAIN LEAD

4. INSTALLATION

For the best results using Koni Brick, follow these instructions:

1. Metal lath
2. Mortar scratch coat
3. Mortar setting bed
4. Koni Brick concrete veneer
5. Mortar joint (half inch to obtain footage specified)



THE PROJECTS



CARDINAL 95 LUXURY APARTMENTS

Just under a mile from State Farm Stadium in Glendale, AZ, you'll find the stunning luxury complex Cardinal 95, featuring Arabian Brick in Intense Red. This product is a thin brick veneer suitable for both interior and exterior applications.



FAQ

1. IS ARABIAN BRICK A PANEL?

No, Arabian Brick comes as loose pieces that vary in size.

2. WHAT TYPE OF ADHESIVE SHOULD I USE?

For exterior applications, we recommend Type N or Type S mortar. For interior applications, you can use those mortars, thinset, or any non-silicone based adhesive manufactured for adhering concrete/cement or porous materials.

3. CAN I USE ARABIAN BRICK AS FLOORING?

No, Arabian Brick is a thin veneer and would risk becoming cracked or damaged if used as flooring.

4. CAN I MOUNT SHELVES OR FRAMES ON ARABIAN BRICK?

Yes, you can drill into Arabian Brick for whatever purpose using a drill bit made for concrete.

5. WHAT KIND OF SEALANT SHOULD I USE?

You can use any non film-forming, breathable sealant made for porous materials, specifically concrete/cement.

6. HOW DO I CUT ARABIAN BRICK?

You can cut Arabian Brick by using an electric saw with a diamond blade or an angle grinder with a masonry blade. We do NOT recommend using a wet saw as coloration will be affected by the water.

7. HOW DO I CLEAN THE BRICK?

Any masonry cleaner can be used to clean the surface of the brick. If you get mortar on the brick, make sure to clean it before it dries!

8. HOW LONG WILL IT TAKE TO GET MY PRODUCT?

Check with a verified Arabian Brick distributor for lead times.

KONIMATERIALS.COM | 210.319.4350

koni[®]
B R I C K



1160 Arion Pkwy Ste 101
San Antonio, TX 78216

