

CLIFF STONE



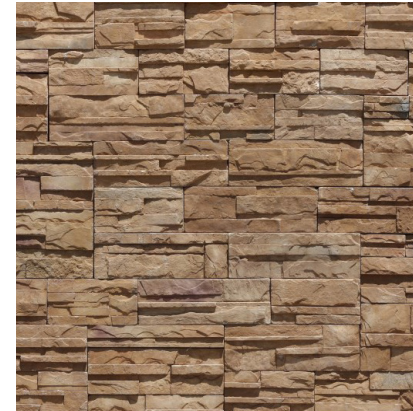
koni[®]
S T O N E

THE PRODUCT

CLIFF STONE

Koni Materials specializes in supplying the highest quality manufactured concrete stone veneer products. Cliff Stone is a great option when considering a home upgrade or construction project! With various colors and textures to accommodate your design inspiration, we can turn your vision into a reality.

CAFE



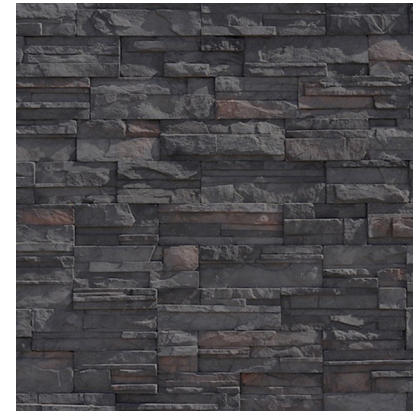
CHARDONNAY



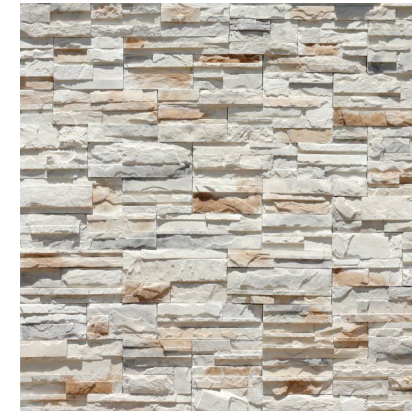
DUBAI



GRAPHITE



SOUTHWEST



WHITE



Colors shown are provided to demonstrate the colors & shades available. COLORS ARE ONLY APPROXIMATE

THE BENEFITS

1. LOWEST CARBON FOOTPRINT

Concrete's unparalleled durability, energy efficiency and complete recyclability, combined with industry innovations such as carbonated concrete or concrete cured with CO₂ rather than water, all contribute to making it the lowest carbon building material over the lifecycle of a structure or pavement.

2. ENERGY EFFICIENT

Concrete's ability to store energy (its thermal mass) helps moderate interior temperature conditions, reducing a building's heating and cooling demands over its service life by up to 8%.

3. LOW MAINTENANCE

Concrete lasts decades longer than alternative building materials, and actually gets stronger over time. This reduces the total cost of ownership as well as the environmental impact associated with more frequent rehabilitation or reconstruction.

4. VERSATILITY

Due to concrete's plasticity when freshly mixed, designers are able to adapt it to whatever project they need.

5. EMISSION FREE

A totally inert substance when cured, concrete is literally emission-free and will not emit any gas, toxic compounds or volatile organic compounds. Concrete materials will also not rot, burn, or deteriorate compared to some natural materials.

6. COST EFFECTIVE

Thanks to their durability, resilience, low maintenance requirements and energy efficiency, concrete structures lower operating costs related to operational energy consumption, maintenance, and rebuilding following disasters.

7. LONG LASTING

The process in which Cliff Stone is produced creates a product that will last years without any maintenance needs. The color infused into our concrete brick veneers will not fade over time, due to sun exposure, heat or the elements.

8. HAND MADE

About 90% of the production process which creates Cliff Stone is executed by hand, making sure that each brick is handled with care and quality checked before making its way to our customers.

THE SPECS

1. SIZE (VARIES)

Individual (flats): 11.81 in - 3.94 in X 5.91 in - 1.97 in x 0.98 in
Individual (corners): 15.75 in - 11.81 in x 5.91 in - 1.97 in x 1.18 in - 0.39 in
Per box (flats): 10.76 square feet
Per box (corners): 6.56 linear feet

2. WEIGHT (VARIES)

Individual (flats): 4.10 lb - 0.44 lb
Individual (corners): 4.67 lb - 1.32 lb
Per box (flats): 72.75 lb
Per box (corners): 46.52 lb

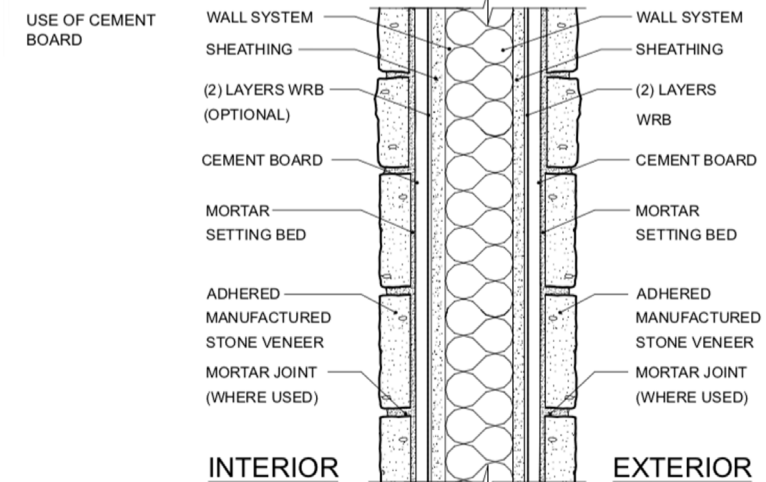
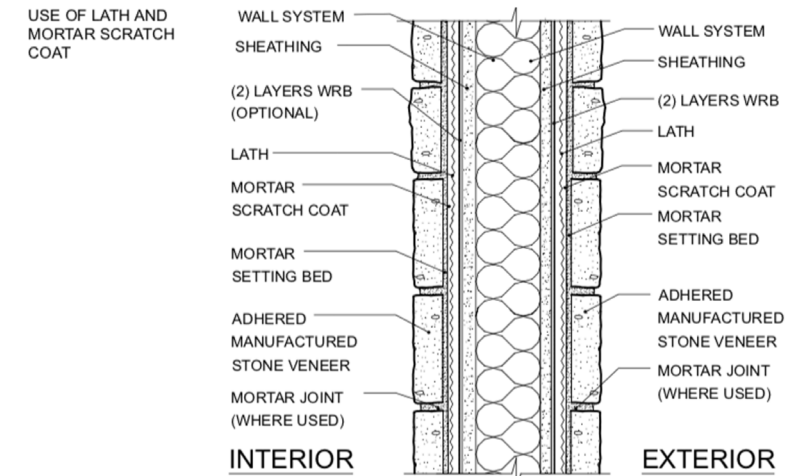
3. COMPOSITION

Portland Cement
Mineral Aggregates
Iron Oxide Pigments
Concrete Additives
DOES NOT CONTAIN LEAD

4. INSTALLATION

For the best results using Koni Brick, follow these instructions:

1. Metal lath
2. Mortar scratch coat
3. Mortar setting bed
4. Koni Brick concrete veneer
5. Mortar joint (half inch to obtain footage specified)



THE PROJECTS



REGALIA BELLA TERRA

The multifamily complex Regalia Bella Terra utilizes Koni Stone, specifically Cliff Stone White, for exterior accents, water features, and buildings. For optimal results, Cliff Stone should be installed using a drystack method.



KONIMATERIALS.COM | 210.319.4350

koni[®]
S T O N E



1160 Arion Pkwy Ste 101
San Antonio, TX 78216

